

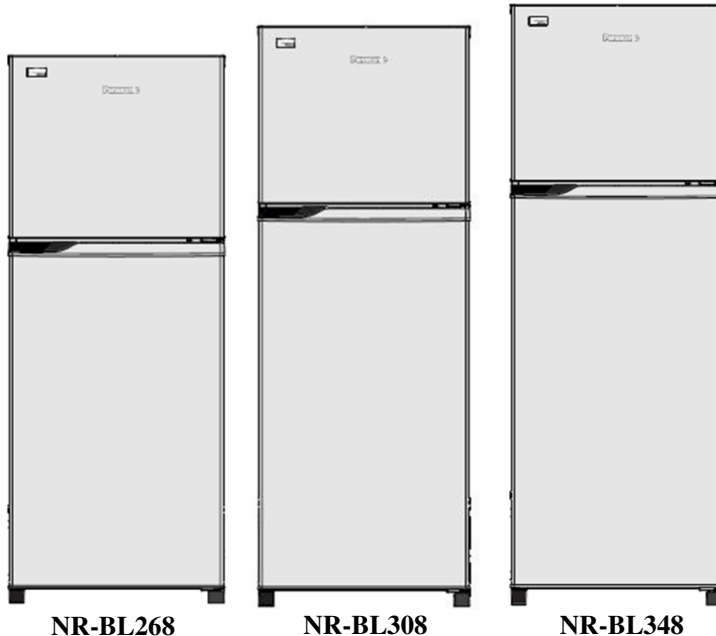
# Service Manual

## Refrigerator

NR-BL268

NR-BL308

NR-BL348



### Product Color

Stainless Color (PS)

Black (PK)

Shining Stainless color (NS)

Shining Silver (VS)

### Destination

Vietnam,  
Indonesia, Philippines, Malaysia,  
RBD, Thailand, Singapore,  
Hong Kong,  
New Zealand



CFCs have been used in refrigerant as refrigerator and the insulation materials for many years. But it is now known that these compounds which once seemed so ideal for use as cleaning agents and in refrigeration systems, destroy the earth's ozone layer as a result, an international body decided on a total worldwide ban of harmful CFCs by the end of 1995.

### ⚠ WARNING

The service information is designed for experienced repair technicians only and is not designed for use by the general public. It does not contain warnings or cautions to advise non-technical individuals of potential dangers in attempting to service a product. Products powered by electricity should be serviced or repaired only by experienced professional technicians. Any attempt to service or repair the product or products dealt within this service information by anyone else could result in serious injury or death.

### IMPORTANT SAFETY NOTICE

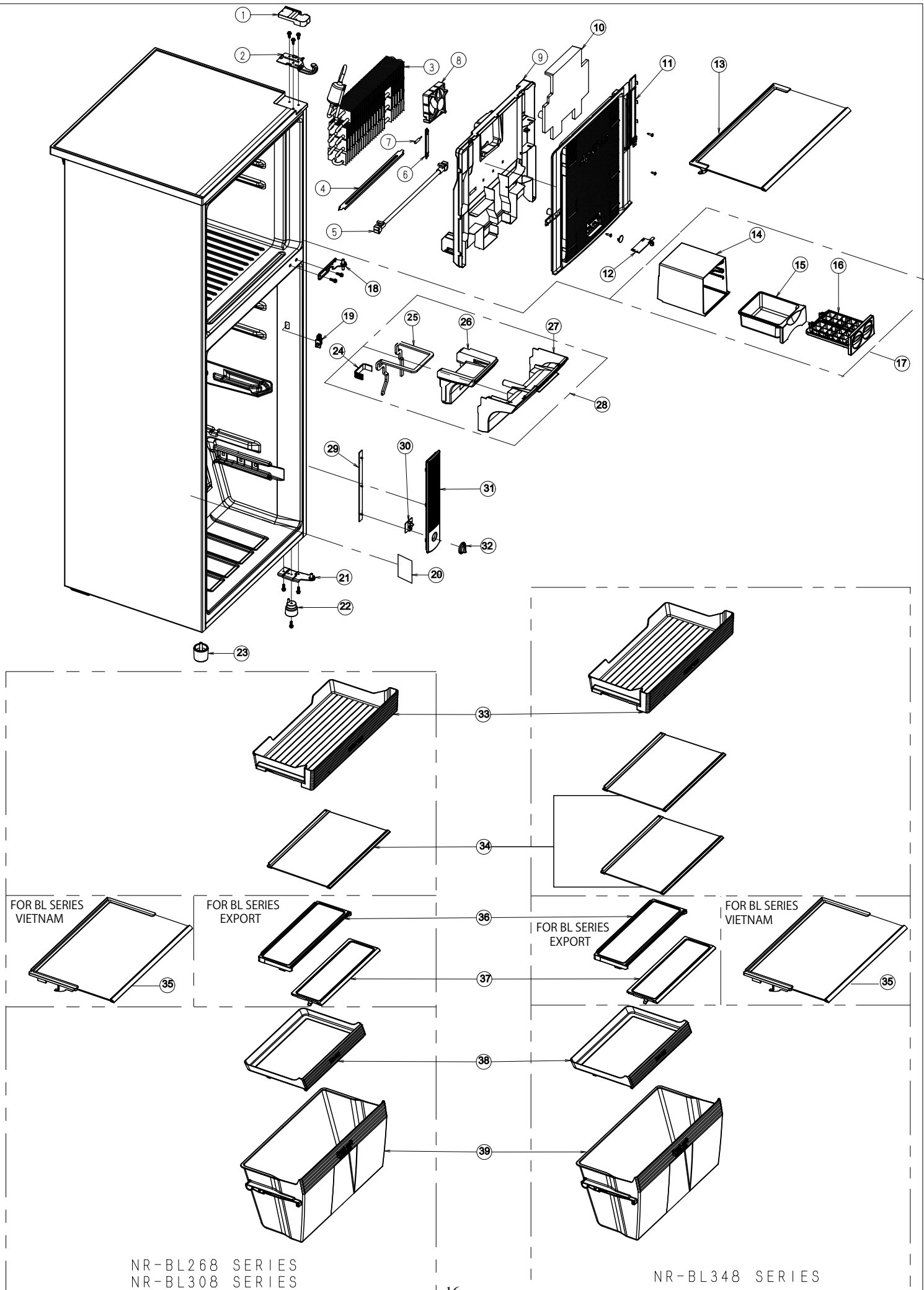
There are special components used in this equipment which are important for safety. These parts are marked by ⚠ in the Schematic Diagrams, Circuit Board Diagrams, Exploded Views and Replacement Parts List. It is essential that these critical parts should be replaced with manufacturer's specified parts to prevent shock, fire or other hazards. Do not modify the original design without permission of manufacturer.

**Panasonic®**

© Panasonic Appliances Vietnam Co., Ltd 2017  
Unauthorized copying and distribution is a violation of law.

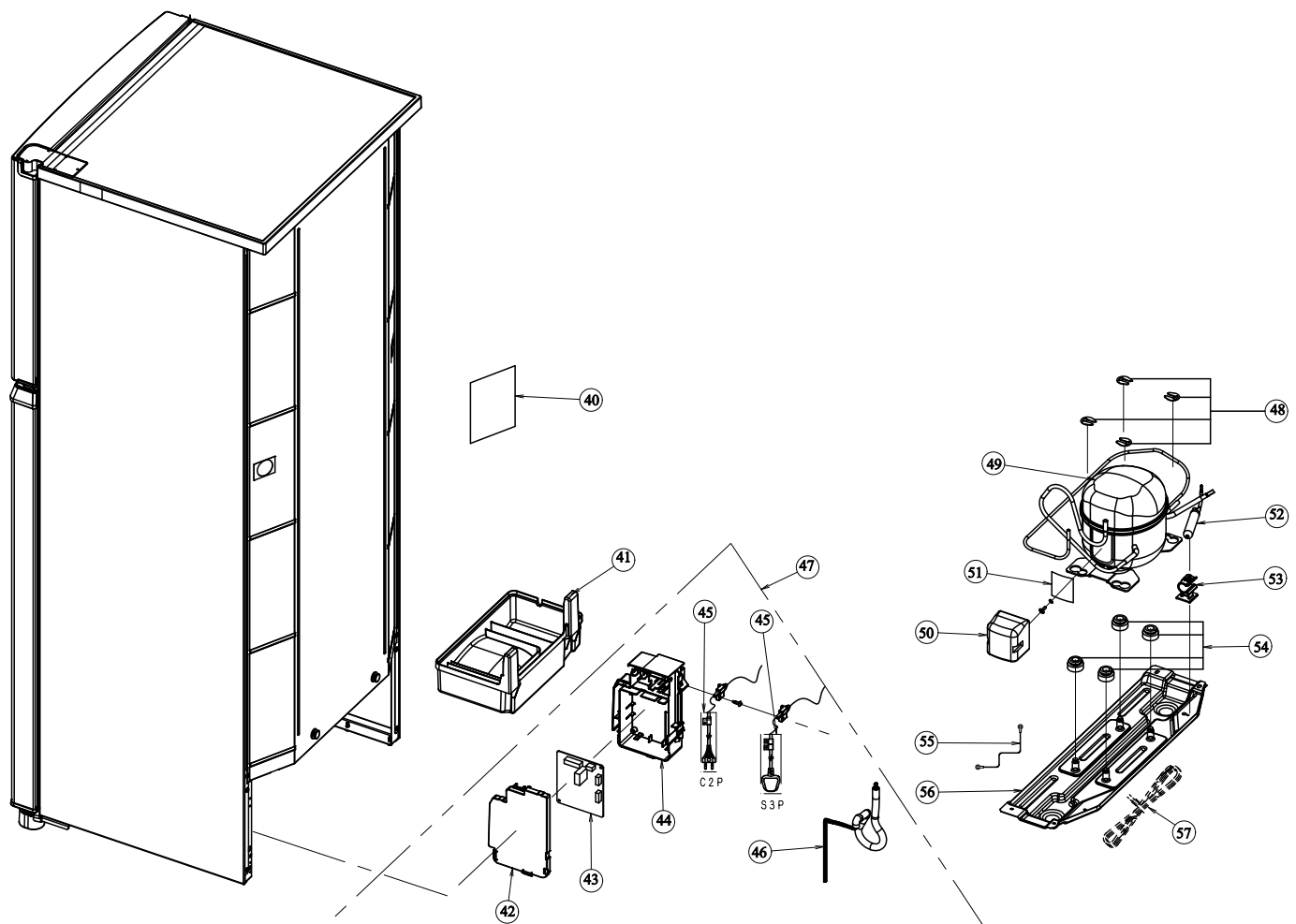
# 7. PART EXPLODED VIEW AND REPLACEMENT PART LIST

## 7.1 Part exploded view: body



## 7.2 Part exploded view: machine room & door assembly

### MACHINE ROOM ASSEMBLY



### DOOR ASSEMBLY

